

MAGNITE MOVE

PANEL VAN



MAGNITE
MOVE
PANEL VAN

Magnite MOVE By RMAA

Move your business forward.

All-new Magnite Move



Enough space to move your business forward.

The MAGNITE MOVE Panel Van has all the space your business needs. With a load capacity of 690ℓ, a payload of 250 kg, easy access points from the rear doors and boot, honeycomb partitioning and cargo netting to keep you and your goods safe, and a Hexa Grip layer finished floor in the load bay, it is designed for maximum practicality and convenience in the LCV market.



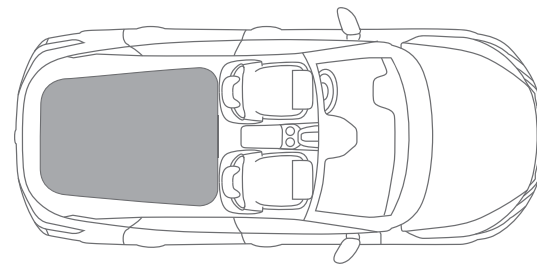
Large cargo bay with Hexa Grip finished floor



All-round honeycomb partitioning

250 kg
Payload

690ℓ
Load capacity



1300 mm
Load bay depth

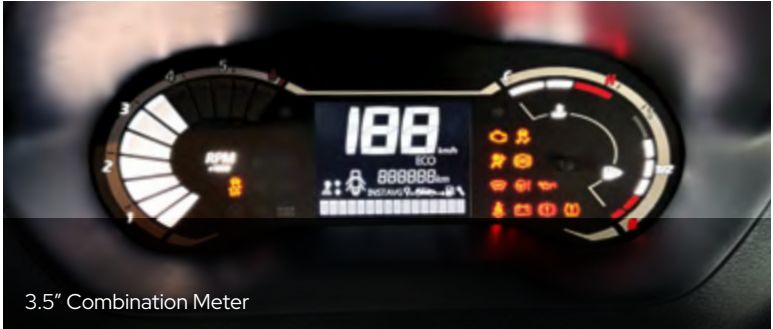
1160 mm
Ave. load bay width





A business-first engine for more efficiency.

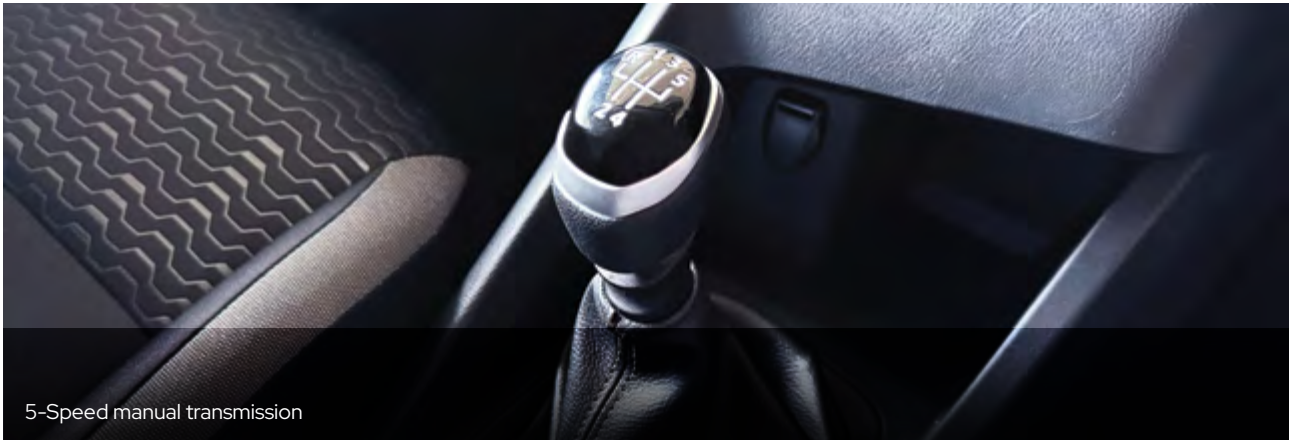
Move ahead with 53kW of power and 96Nm of torque from the highly efficient 1.0L engine. Together with the smooth 5-speed manual gearbox, you can expect to switch up a gear and get maximum city acceleration with minimal fuel consumption to get where you need to go.



3.5" Combination Meter



Efficient 1.0L engine



5-Speed manual transmission

Where style meets practicality.



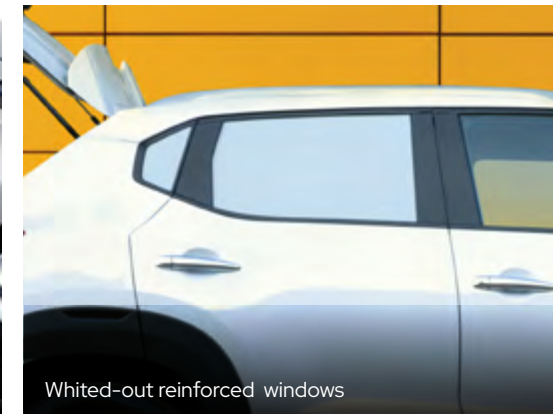
You are making your mark in the business world, so look the part with details to admire from every angle, and act the part with smart and practical features as standard.

Unapologetically unique, and designed to break through the clutter, the MAGNITE MOVE projects confidence and success from every angle. Distinctive headlamps light the way, while an imposing front grille ensure you get noticed, for all the right reasons.

Add to this practical designs like whited-out, honeycomb partitioned, reinforced windows with contra vision for hiding your valuable goods, and sleek yet practical 16" steel wheels, and you've got a perfect blend of bold styling and practicality.



Bold and dominating front grill



Whited-out reinforced windows



Distinctive halogen headlights

Comfort and convenience comes standard.

The MAGNITE MOVE boasts best in class 700mm front seat distancing, for more space and comfort. Then admire the attention to detail in the smart and practical storage compartments.



3.5" Combination Meter



Electric mirrors and windows



10ℓ Glove box



Auto airconditioning



Class-leading cabin space.



Safety features for total peace of mind.

A bump in the road cannot stop you, nor can water clogged streets. Be unstoppable, no matter where you go with a high ground clearance and safety features like ABS, EBD, HBA and dual airbags that ensure you are always protected and always in control.

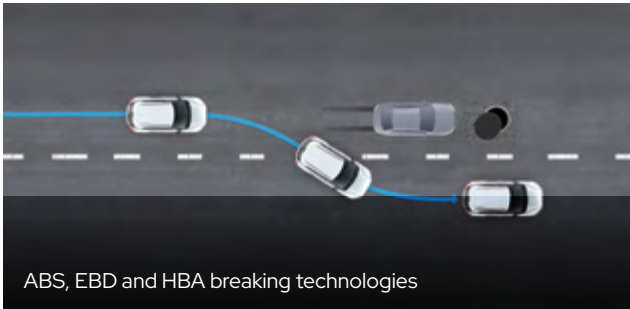


Dual front airbags

Image for illustrative purposes only



205 mm Ground clearance



ABS, EBD and HBA braking technologies

Technical specs sheet



Body type

- 5-Door

Seating capacity

- 2

Engine, power, transmission

- Petrol BR10 999cc, 3 Cylinders Engine
- 53kW @ 6250 rpm & 96 Nm @ 3500rpm
- 5,9l / 100km Combined Fuel Efficiency
- 5 Speed Manual Transmission

Interior and convenience

- Cloth Upholstery
- 3.5-inch Combination Meter
- 6 Speakers
- Steering Wheel Controls (Audio + Tel)
- Auto Air-Conditioner
- Front & Rear Electric Windows
- Front 12V Power Socket

Exterior

- 16" Steel Wheels
- Black Coloured Bumpers
- Black Coloured Mirrors
- Electric Adjustable Mirrors
- Chrome Door Handles
- Halogen Headlamps
- Rear Roof Spoiler
- Drive Computer
- Roof Rails

Safety

- Dual Front Airbags
- ABS, EBD, HBA
- Rear Parking Sensors

Service and warranty

- Service Intervals (Enquire at the dealership)
- Warranty (Enquire at the dealership)

MODEL		1.0 Move 5MT	
ENGINE			
Engine Displacement	cc	999	
Number of Cylinders		3	
Maximum Power	kW @ rpm	53 @ 6250	
Maximum Torque	Nm @ rpm	96 @ 3500	
Top Speed	km/h	150	
Fuel Type		Petrol	
Fuel Tank Capacity	ℓ	40	
Fuel Consumption - Combined	ℓ/100km	5,90	
CO2 Emissions - Combined	g/km	140,15	
Emissions Level		-	
TRANSMISSION & DRIVE TRAIN			
Transmission		5-Speed Manual	
Gear Ratio			
	1st	4,091	
	2nd	2,263	
	3rd	1,393	
	4th	1,081	
	5th	0,791	
	Reverse	3,550	
	Final Drive	4,920	
Driven Wheels		2WD	
CHASSIS			
Suspension Front		MacPherson Strut with Lower Transverse Link	
Suspension Rear		Twin Tube Telescopic Shock Absorber	
Stabilizer Bar		Standard	
WEIGHTS & DIMENSIONS			
Gross Vehicle Mass (GVM)	kg	1397	
Overall Length	mm	3995	
Overall Width Without Mirrors	mm	1758	
Overall Height (Unladen)	mm	1571	
Wheelbase	mm	2500	
Track (Tread): Front / Rear	mm	1536/1535	
Overhang: Front / Rear	mm	787/707	
Ground Clearance	mm	205	
Turning Radius (Curb To Curb)	m	5	
Maximum Roof Load	kg	50	
Payload	kg	250	
WHEELS & TYRES			
Wheel Size & Type		16-inch Steel with wheel cap	
Wheel Dimensions		195/60R16	
Spare Tyre		Full Size	
Tyre Pressure Monitoring System		Standard	

MODEL		1.0 Move 5MT	
EXTERIOR			
Front & Rear Bumper: Body Colour		Standard	
Exterior Door Mirror		Black	
Electric Adjustable Door Mirror		Standard	
Exterior Door Handle		Chrome	
Headlamp Type		Halogen	
Headlight Levelizer System		Manual	
Front Wiper		Variable Intermittent	
Rear Wiper		Standard	
Rear Roof Spoiler		Standard	
COMFORT AND CONVENIENCE			
Seat Upholstery		Cloth	
Manual 2-Way Driver Seat Adjustment		Standard	
Manual 2-Way Passenger Seat Adjustment		Standard	
3.5-inch Combination Meter		-	
Manual Anti-Dazzle Rear View Mirror		Standard	
Outside Thermometer		Standard	
Steering Wheel Material		Urethane	
Shift Lever		Urethane	
Electric Power Steering (EPS)		Standard	
Manual Tilt Steering Wheel Adjustment		Standard	
Front & Rear Electric Windows		Standard	
Remote Central Locking		Standard	
Audio System		With Pre-Wiring	
Number of Speakers		6	
Steering Wheel Controls		Standard	
Front Cup Holder		Standard	
Air-Conditioner		Auto	
12V Power Socket		Front Centre Console	
SAFETY AND SECURITY			
Dual Front Airbags		Standard	
3 Point Driver Seat Belts with Pretensioner & Load limiter		Standard	
3 Point Passenger Seat Belts with Pretensioner & Load limiter		Standard	
Anti-Lock Braking System (ABS)		Standard	
Electronic Brake-Force Distribution (EBD)		Standard	
Hydraulic Brake Assist (HBA)		Standard	
Vehicle Dynamic Control (VDC)		Standard	
Hill Start Assist (HSA)		Standard	
Mechanical Fixed Key With Remote		Standard	
Hook & Net for Cargo		Standard	
Immobiliser + Alarm		Standard	
Rear Parking Sensors		Standard	
Fire Extinguisher		Standard	

Legal notice: Every effort has been made to ensure that the contents of this brochure is correct at the time of going to print (December 2024). This brochure may be produced featuring prototype or accessorised vehicles exhibited at motor shows and in accordance with the company's policy of continuously improving its products. Nissan South Africa reserves the right to change the specifications, and the vehicles described and shown in this brochure at any time. Nissan dealers will be informed of any such modifications as quickly as possible. Please check with your local Nissan dealer to receive the most up-to-date information. Due to the limitations of the printing process used, the colours shown in this brochure may differ slightly from the actual colours of the paint and interior trim material used. All rights reserved. Reproduction in whole or part of this brochure without the written permission from Nissan is forbidden.

Features and specifications are subject to change depending on market and grade. Please consult your local Nissan Dealership for more information.